

MVMC NEWS

New email address for newsletter |MG Y Story | MotionSensor LED Globes

NEWSLETTER & WEBSITE EDITOR

GRAHAM MEYER

gmjm@internode.on.net

Something seems to have gone wrong with the email address for submitting articles for the newsletter.

Members have told me they have submitted articles but they haven't arrived in the MVMC inbox.

So, if you would please resubmit those article and any future article to my personal email address I'll make sure your submission is published in the next newsletter.



1912 McDonald EB vintage tractor on display at National Museum after repatriation to Australia.

One of the very first tractors made in Australia now has pride of place in the National Museum in Canberra after being repatriated from the United States.

The 1912 McDonald EB was produced by Melbourne engineers Alfred and Ernest McDonald, who were responsible for the first-ever Australian-made tractor four years earlier.

It was sold to Frank Chilcott for use at his farm on French Island in Victoria's Western Port Bay.

In the 1970s it was sold to a collector and restored, before eventually ending up in the United States.

That led to a campaign among tractor enthusiasts to have it repatriated and placed on public display.

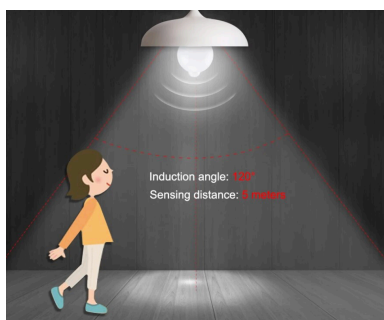




Motion sensor security lights for under \$5

Security lights with motion sensors concealed within a globe design blend aesthetics with functionality. As darkness falls, the motion sensor inside the globe awakens, detecting any movement within its range. Instantly, a bright, focused beam of light pierces the darkness, illuminating the area and deterring potential intruders. The globe's design conceals the sensor, ensuring a discreet yet effective security solution. Beyond their protective role, these lights offer practicality, enhancing visibility in walkways, gardens, and outdoor entertaining areas. With their sleek, globe-shaped form, they seamlessly integrate into various architectural styles, elevating both security and ambiance in the surrounding environment.

Available on Aliexpress for under \$5 for a 12W led globe and around \$8 for the 18w, and freight free.



THE MORRIS MG Y SEDAN

The Morris MG Y sedan is a classic British automobile that holds a special place in automotive history. Produced by the Morris Motor Company, a well-known British automaker, the MG Y sedan was introduced in 1947 and remained in production until 1953. It is widely regarded as an iconic representation of post-World War II British motoring.

One of the standout features of the MG Y sedan was its timeless and elegant design. The car boasted a sleek and streamlined body, which was a departure from the more boxy and utilitarian designs of the era. Its graceful curves, rounded fenders, and chrome accents added a touch of sophistication to its appearance, making it a desirable choice for those seeking both style and function.

Under the hood, the Morris MG Y sedan was powered by a four-cylinder engine that provided respectable performance for its time. While not a sports car, it offered a smooth and comfortable ride, making it suitable for both city driving and long-distance journeys. Its suspension and handling characteristics contributed to a pleasant driving experience, and it was known for its reliability and durability.

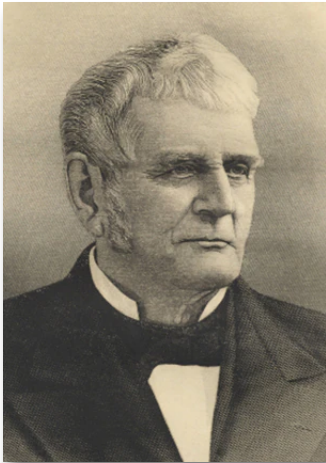
The interior of the MG Y sedan was designed with comfort and practicality in mind. It featured spacious seating for both the driver and passengers, with a well-laid-out dashboard and controls. The cabin was adorned with quality materials and craftsmanship, further enhancing its overall appeal.

The Morris MG Y sedan also had a strong presence in motorsport, particularly in rallying. It achieved success in various racing events, which helped solidify its reputation as a capable and competitive vehicle.

Today, the Morris MG Y sedan has become a sought-after collector's item among vintage car enthusiasts. Its rarity, elegant design, and historical significance make it a prized addition to any classic car collection. It stands as a testament to the automotive craftsmanship of its era and continues to be celebrated for its enduring charm and performance.



John Deere was a blacksmith who developed the first commercially successful, self-scouring steel plow in 1837 and founded the company that still bears his name.



Deere was born in 1804 in Rutland, Vermont. After his father was lost at sea when he was four years old, Deere was raised solely by his mother. As a young man, he won acclaim for his workmanship and ingenuity as a blacksmith. When the New England economy collapsed in 1836, he followed other Vermonters to Illinois, where he established a blacksmith shop in Grand Detour.

Shortly after arriving, Deere learned from his farmer customers that the commonly used cast-iron plows of the day performed poorly in the sticky soil of the Midwest prairie. Soil clung to the plow bottoms, and farmers had to stop and scrape off the dirt every few feet.

Convinced that a plow with a highly polished surface would shed the sticky soil as it moved through the field, Deere made a plow using steel from a broken sawblade. The need for a self-scouring plow was so great, it is said hundreds of people gathered at the farm of Lewis Crandall near Grand Detour to see the young blacksmith test his new product. It wasn't long before manufacturing plows became not only Deere's identity, but his business as well.

In 1848, Deere moved his growing operation 70 miles southwest to Moline, Illinois, on the east bank of the Mississippi River. The river provided water power for running a factory, as well as riverboats for bringing in raw materials and moving plows to market.

Soon, Deere's company was making 1,000 plows a year. Business boomed as Deere established a reputation for both his plows and his principles. Those same principles guide Deere & Company to this day. Among them was his insistence on selling only high-quality products.

In 1868, Deere's business was incorporated under the Deere & Company name.

From his arrival in Moline, Deere was actively involved in civic activities, and in 1873 he became the second mayor of Moline.

John Deere died in 1886, with his heirs leading the company for the next century.



World Record Tractor Tour

The record for longest journey by tractor goes to a German man named Hubert Berger who traveled across Europe between May and October of 2016 covering 15,769.38 miles. What makes this feat even more impressive is that Berger did it all on a vintage 1970 Eicher Tiger 2, which has a top speed of less than 20 mph.



Five surgeons are taking a coffee break...

1st Surgeon:

"Accountants are the best to operate on because when you open them up, everything inside is numbered."

2nd Surgeon: "Nah, librarians are the best. Everything inside them is in alphabetical order."

3rd surgeon: "Try electricians! Everything inside THEM is colour coded."

4th Surgeon: "I prefer lawyers. They're heartless, spineless, gutless and their heads and their butts are interchangeable."

5th Surgeon who has been quietly listening to the conversation: "I like tractor restorers... they always understand when you have a few parts left over at the end."

World's largest Steam Tractor

The megalith of a steam tractor was first built in 1905 by JI Case Company in Racine, Wisconsin. It served as a heavy freighter to pull large and heavy loads over long distances between rail connections.

This innovation marked a significant shift from traditional horse-drawn transportation and greatly increased productivity in agriculture and industry.

The 150 hp Road Locomotive was a precursor to modern tractors and laid the foundation for the mechanised farming equipment we use today. Its legacy endures as a symbol of engineering prowess and its pivotal role in advancing transportation and farming practices.

Only nine 150HP Case road locomotives were built in the two years it was in production. After they stopped being produced, largely due to a lack of metallurgy at the time, their parts were sold off for scrap.

The 150 Case RL weighs in fully loaded at 37 tons, is 7.6m long, 4.2m wide, standing over 3.6m tall. The engine burns both wood and coal to maintain its operating pressure of 180 psi steam. The bunkers have a capacity for 3 tons of coal and the water tank will hold 2,271 litres of water.



Farmall tractors set world record at Inverell

August 1, 2023

TRACTOR collectors from across eastern Australia gathered in Inverell on the weekend to set a new Guinness World Record for the largest parade of Farmall tractors and celebrate the centenary of the Case IH Farmall.

Set on Saturday, the record saw 110 Farmalls ranging in age from 1920s to current models travel 3.2km around the trotting track at the Inverell Showground.

Representatives from Guinness World Records were in the northern New South Wales town for the attempt, with participants and onlookers erupting into celebrations when Guinness World Records adjudicator confirmed the record had been set.